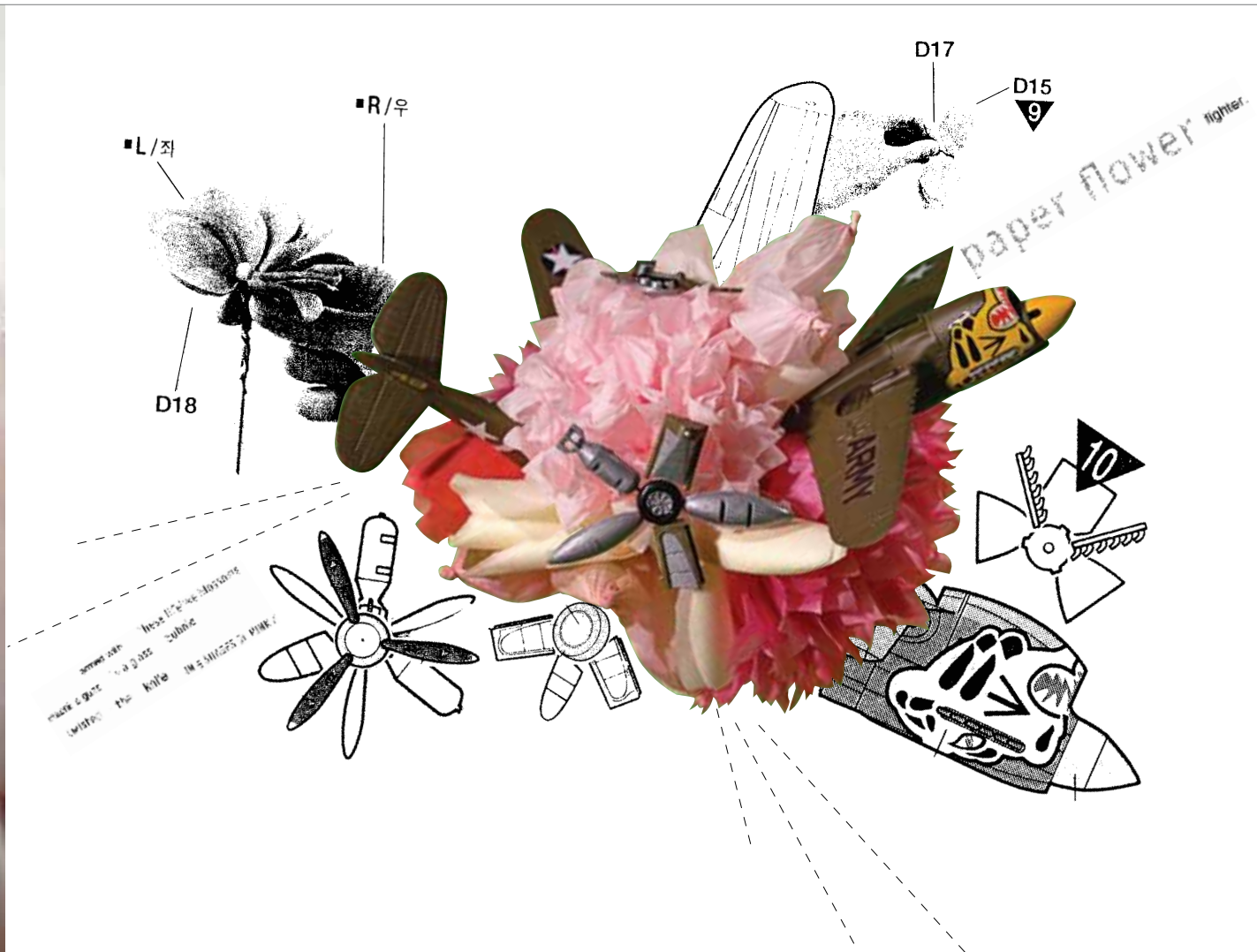


**ERIN ANDERSON** | DESIGN PORTFOLIO

1410 MARLOWE  
CANTON, MICHIGAN 48187

734 | 776 | 0385

[ecanderson2386@gmail.com](mailto:ecanderson2386@gmail.com)



MODEL KIT COMBINATIONS | Object

The instructions and parts of two model kits were combined to create an image that then dictated the form of the product (a parachute).



#### MODEL KIT COMBINATIONS | Object

The instructions and parts of two model kits were combined to create an image that then dictated the form of the product (a parachute).

[PAGE 2 OF 2]



**UNTITLED FILM STILLS**  
 FEBRUARY 3 - MARCH 31, 2008

Since 1977, Cindy Sherman has made photographs of herself, which are not self-portraits. "I'm trying to make other people recognize something of themselves rather than me," the artist has said. Her endeavor has yielded multiple series of photographs in which she deftly investigates issues about the construction of self-image, particularly for women. In the Untitled Film Stills series, Sherman explores stereotypes of women in films of the 1950s and 1960s.

**CINDY SHERMAN**  
*life and times*

- 1964** Born in Elmira, New York
- 1970** First film stills exhibition in Europe
- 1977** Untitled Film Stills series begins
- 1976** Sherman produces film *Self-Portrait (Sitting in a Chair)*
- 1980** Untitled Film Stills series completed
- 1997** Untitled Film Stills exhibited at MoMA



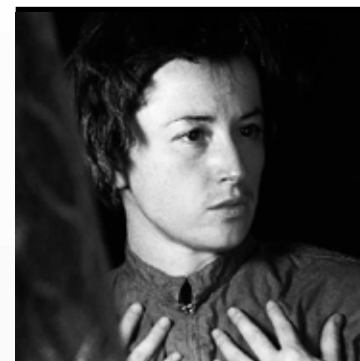
**UNTITLED FILM STILLS**  
 FEBRUARY 3 - MARCH 31, 2008

Since 1977, Cindy Sherman has made photographs of herself, which are not self-portraits. "I'm trying to make other people recognize something of themselves rather than me," the artist has said. Her endeavor has yielded multiple series of photographs in which she deftly investigates issues about the construction of self-image, particularly for women. In the Untitled Film Stills series, Sherman explores stereotypes of women in films of the 1950s and 1960s.



In the "Untitled Film Stills," the artist depicted herself dressed in the guises of clichéd B-movie heroines. In photograph after photograph, Sherman was ever present, and yet never really there — her adaptation of a range of personae highlighting the masquerade of identity. Her appropriation of the space on both sides of the lens destabilized the traditionally gendered opposition between artist and model, object and subject — one that had been theorized by film critics in terms of spectatorship and its gendered codes of looking.

**"THE STILL MUST TEASE WITH THE PROMISE OF A STORY THE VIEWER OF IT ITCHES TO BE TOLD."**  
 - CINDY SHERMAN



**SCHEDULE OF EVENTS**

- SUNDAY, FEBRUARY 3**  
**Opening Reception at 12:00 p.m.**  
 Lunch will be served.  
 Tickets: \$25.00
- FRIDAY, FEBRUARY 15**  
**Cindy Sherman Lecture**  
 Meet the artist as she talks about the impact of the Untitled Film Stills project.  
 Tickets: \$15.00
- SATURDAY, FEBRUARY 28**  
**Make Your Own Stills Workshop**  
 Take a cue from Cindy Sherman and learn how to create your own unique version of the Untitled Film Stills.  
 \$5.00 per project / Free admission



CINDY SHERMAN BROCHURE | Tri-fold Brochure

Brochure created to advertise a fictional exhibit of Cindy Sherman's "Untitled Film Stills" series at MOCAD.



EXECUTIVE PRODUCER  
Erin Anderson

BUSINESS AFFAIRS  
FOR CAPITOL RECORDS  
Robert Anderson

CLEARANCE FOR  
CAPITOL RECORDS  
Deborah Anderson

PROJECT MANAGER  
Amy Anderson

MUSIC EDITOR  
Justin Thiede

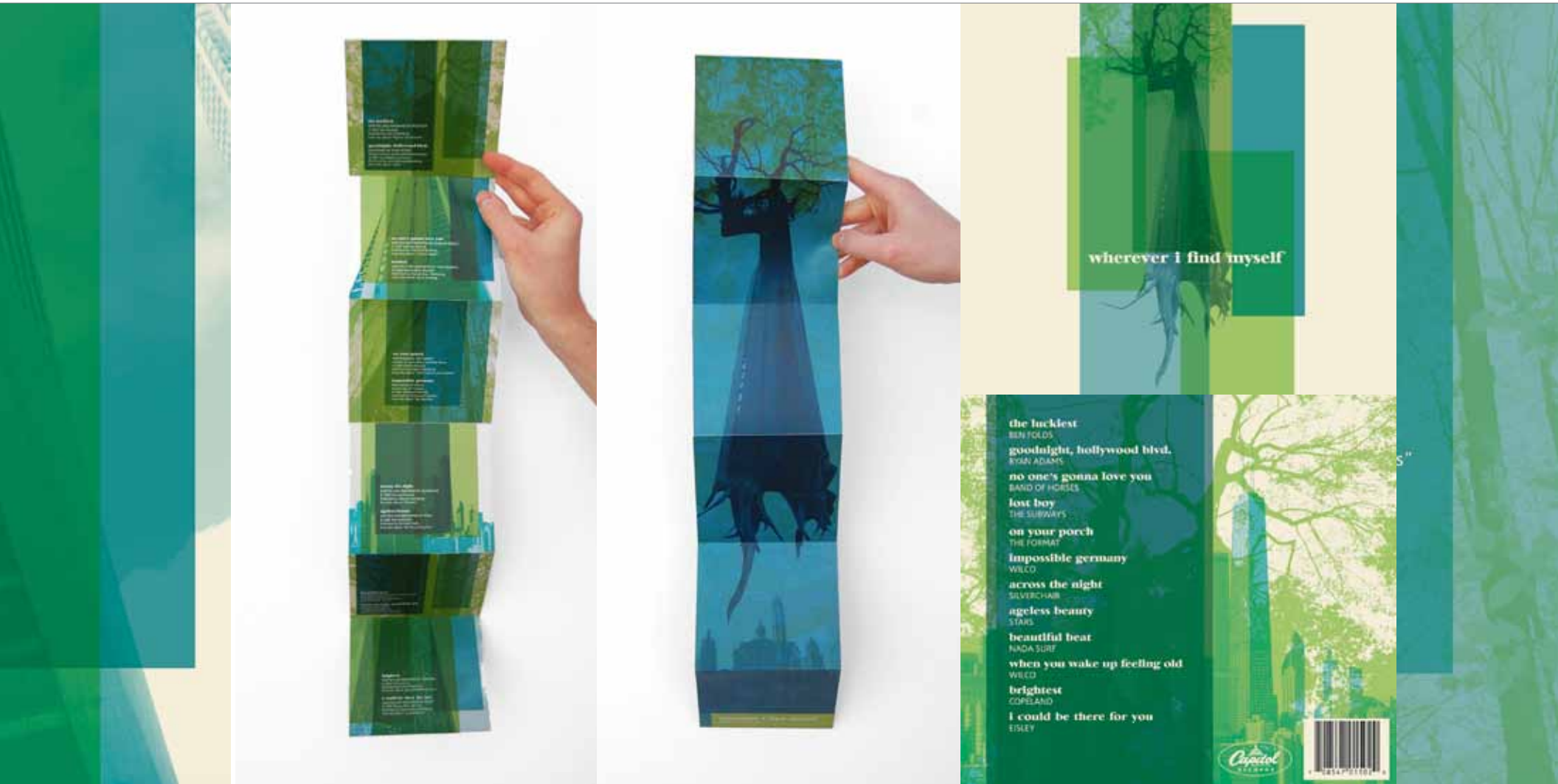
MASTERING  
Derek Anderson

GRAPHIC DESIGN  
Erin Anderson

WHEREVER I FIND MYSELF | CD Package

Biographical CD package based on a quote by Maya Angelou: "I long, as does every human being, to be at home wherever I find myself."

[PAGE 1 OF 2]



WHEREVER I FIND MYSELF | CD Package

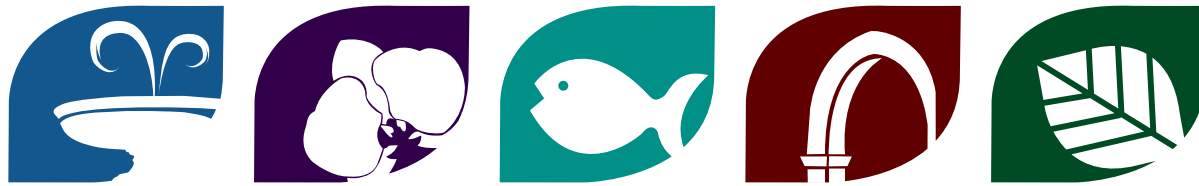
Biographical CD package based on a quote by Maya Angelou: "I long, as does every human being, to be at home wherever I find myself."



PRIMARY LOGO

BELLE ISLE REDEFINED | Branding

Branding project aimed towards uniting and promoting all of the attractions located on Detroit's island park, Belle Isle.

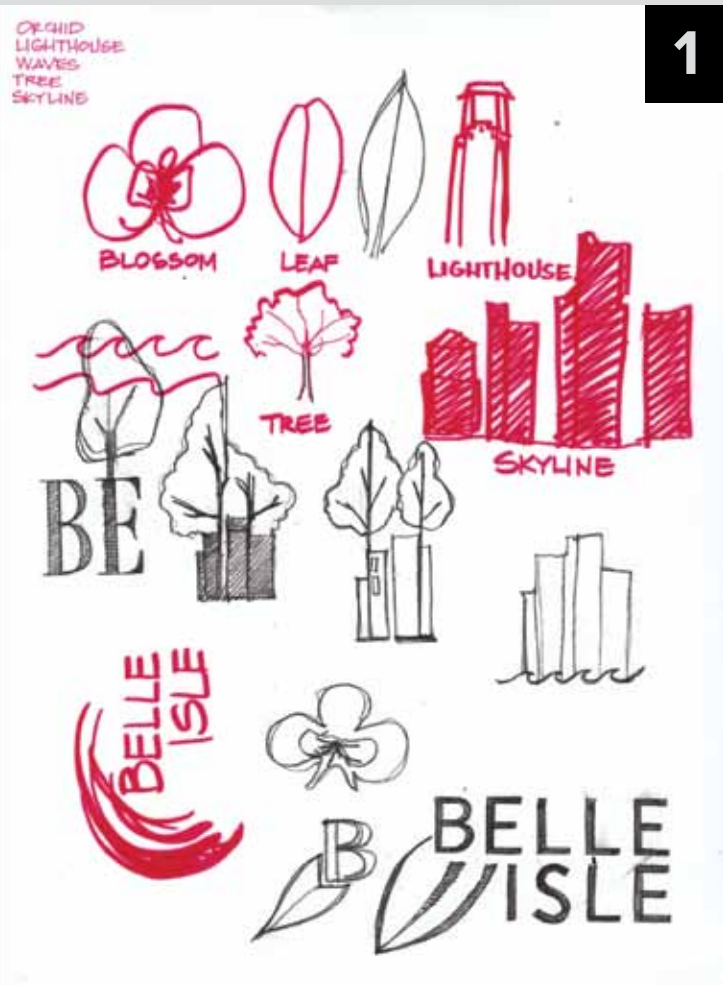


SUB LOGOS



BELLE ISLE REDEFINED | Branding

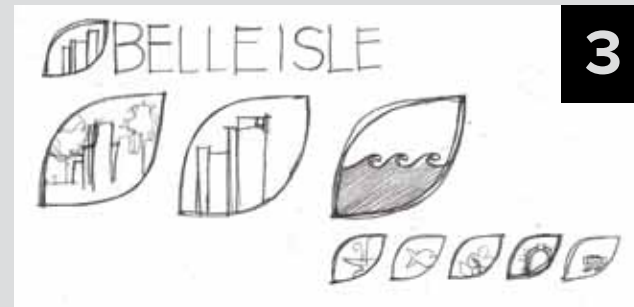
Branding project aimed towards uniting and promoting all of the attractions located on Detroit's island park, Belle Isle.



1



2



3

**1** INITIAL SKETCHES

After a visit to the Isle, a few icons were chosen for possible logo incorporation. These are the first sketches with those icons and the Belle Isle text.

**2** INITIAL SKETCHES

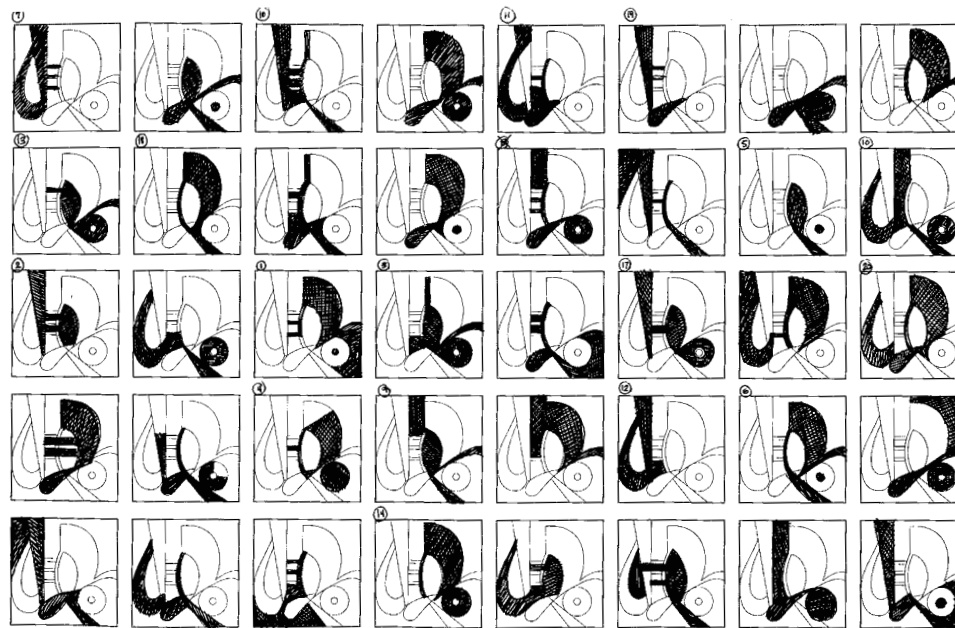
Here begins the thought of using the leaf icon as a sort of container to create not only a main logo for the park, but sub logos for each individual attraction.

**3** INITIAL SKETCHES

This is the final evolution of the logos on paper. These designs were moved onto the computer and further evolved into the final logos seen in the finished product.



we have  
two giant  
hamsters  
running on  
a massive  
wheel in  
our secret  
underground  
cave.



FOUND OBJECTS | Poster

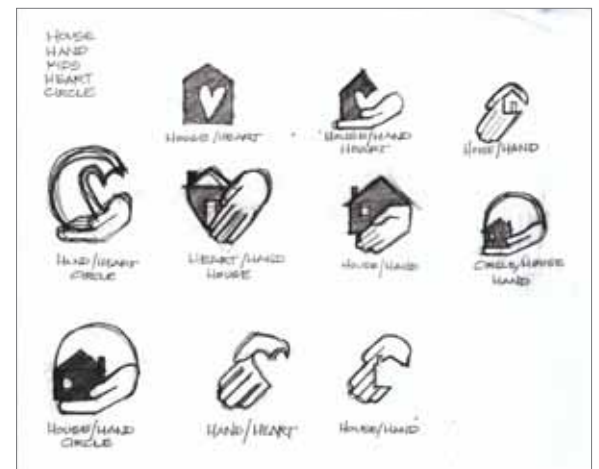
Image was created from found objects, and an "alphabet" was created from simple shapes found in the finished image.



DONOR INFORMATION PACKAGE



SUB LOGOS



PRIMARY LOGO

SOS COMMUNITY SERVICES | Branding

Rebranding project including logo development and marketing materials.



WISHING YOU A JOYOUS  
HOLIDAY SEASON AND A  
HAPPY NEW YEAR



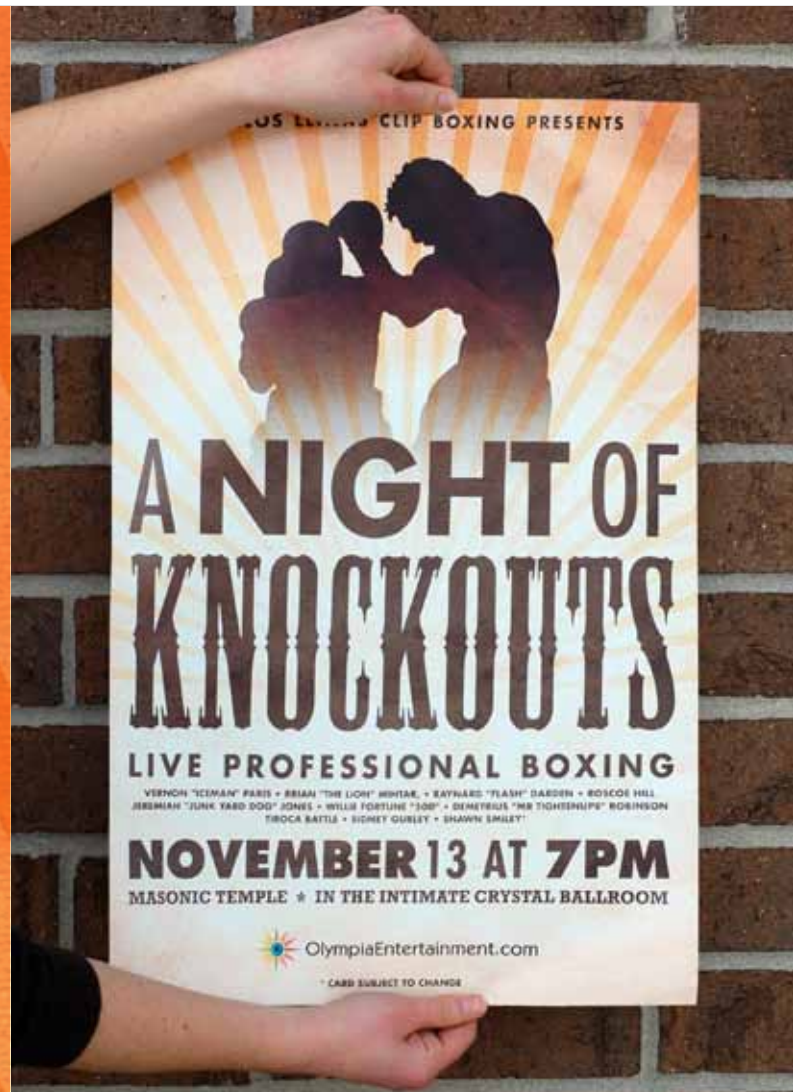
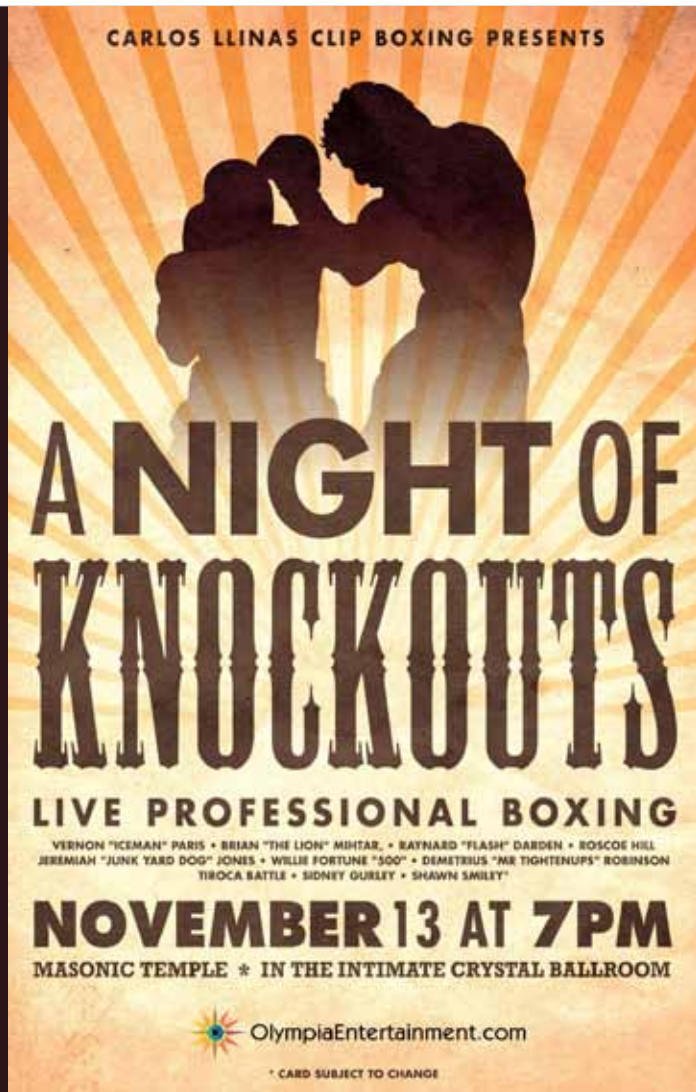
OLYMPIA ENTERTAINMENT | Holiday Card

Holiday card created for Olympia Entertainment in Detroit, Michigan.



DETROIT RED WINGS | Olympia Club Pass Booklets

Set of 3 booklets with varying amounts of passes for the Olympia Club at Joe Louis Arena in Detroit, Michigan.



NIGHT OF KNOCKOUTS | Event Poster

Poster created for a boxing event at the Masonic Temple Theater in Detroit, Michigan.